

# EcuTek ProECU



## Software Overview

v1.2

# Contents

|   |   |
|---|---|
| Introduction .....  | 2 |
| Advantages .....  | 2 |
| Speed of Installation & Use.....                            | 2 |
| Effectiveness .....   | 2 |
| Free Access to Ongoing Product Development and Updates..... | 2 |
| Licensing Model .....                                       | 2 |
| EcuTek ProECU Products .....                                | 3 |
| Getting Started.....  | 4 |
| Package Contents .....                                      | 4 |
| Installation Prerequisites .....                            | 5 |
| Software.....   | 5 |
| Hardware requirements .....                                 | 5 |
| Licenses & Updates .....                                    | 6 |
| Feature and License Information .....                       | 6 |
| License Usage Information.....                              | 6 |
| Supported ECU Versions .....                                | 7 |
| Checking Software Support .....                             | 7 |
| ProECU Software Version .....                               | 8 |

# Introduction

EcuTek ProECU allows alteration of the data within the factory engine control unit. This facility permits optimal tuning of the car's ECU to the hardware employed and the performance desired.

This is not a piggy back ECU.

This is not an aftermarket ECU.

This is a true reprogram of the standard OEM engine management unit.

## Advantages

### Speed of Installation & Use

---

This facility is implemented through the standard diagnostic connectors of the car. No direct access to the ECU is required, and there's no soldering, wire cutting or vehicle disassembly required.

Reprogramming of the ECU can be performed in less than 1 minute in most situations. No workshop is required. The entire process may be performed from the driver's seat of the car.

### Effectiveness

---

A cleaner and more effective solution than either piggy back or replacement ECUs, EcuTek ProECU is certainly the future for ECU tuning. You keep the reliable idle control, cold start, diagnostics, knock correction, safety features and other features taken for granted with the excellent OEM ECU, only changing the parameters required – no need to tune everything from scratch as with an aftermarket ECU. More time can be spent mapping the areas of interest, rather than being spent trying to get an aftermarket ECU just to drive as well as the original.

### Free Access to Ongoing Product Development and Updates

---

ProECU supports a wide range of vehicle models from Japan, Europe and the USA.

As new cars/ECUs are released, support for these will be added to ProECU. These updates will be made available to all customers at no charge.

### Licensing Model

---

EcuTek are committed to ongoing product support and development. In fact, this single product constitutes several man years of work. A license is required to program each ECU. This fee is only taken once, after which that single ECU may be reprogrammed as many times as desired. E.g. A car owner may have their car mapped, and then return the next year with a new turbo. Obviously some remapping will be necessary, and the tuner will charge for this service. However, EcuTek only take a license fee the first time that car (more specifically ECU) is programmed.

## EcuTek ProECU Products

---

Products in the EcuTek ProECU range include:

**Subaru K-Line 99** – ECU reprogramming software for the 1999/2000 Model Year of Subaru Impreza Turbo (WRX and STI), Forester Turbo.

EcuTek currently supports 35 different ECU versions

**Subaru K-Line 2002** – ECU reprogramming software for the 2001-2005 Model Year of Subaru Impreza Turbo (WRX and STI) , Forester , Legacy B4 Twin Turbo.

EcuTek currently supports 125 different ECU versions

**Subaru K-Line 2004** – ECU reprogramming software for the latest 2004-2005 Fly-by-Wire ECU's fitted to the 2.5 litre US STI, 2.5 litre Forester, Legacy GT and Outback, Subaru Baja Turbo.

EcuTek currently supports 230 different ECU versions

**Mitsubishi K-Line** – ECU reprogramming software for the older Mitsubishi Lancer Evolutions ECU's fitted to the EVO 5 to EVO 9 plus the Mitsubishi Airtrek, GTA and European Outlander Turbo models.

EcuTek currently supports over 85 different ECU versions

**ProECU Mitsubishi EVO X** - ECU reprogramming for the latest Mitsubishi EVO X and new Lancer Ralliart models, currently supports over 90 different ECU versions.

**ProECU Mitsubishi CAN Colt** - ECU reprogramming for the Euro model Mitsubishi Colt CZT currently supports 6 different ECU versions including the SMART ForFour Brabus model.

**ProECU Mitsubishi CAN Diesel** - ECU reprogramming for Mitsubishi Common Rail Diesel family including Pajero, Triton, L200 and Shogun currently supports over 135 different ECU versions.

**ProECU Subaru CAN Diesel** – ECU reprogramming software for the latest 2007-2009 Flat Four Diesel engine. This ECU family is fitted to the WRX, Legacy, Outback and Forester.

ProECU Subaru Diesel currently supports 40 different ECU versions

**ProECU Subaru CAN Petrol** – ECU reprogramming software for the latest 2007-2008 Fly-by-Wire CAN BUS family ECU's fitted to the STI, WRX, S-GT, Legacy GT, Outback, Forester and Subaru Baja Turbo.

ProECU Subaru currently supports 142 different ECU versions

**ProECU Mazda DISI** – ECU reprogramming software for the latest DISI (Direct Injection Spark Ignition) models including Mazda 3, Mazda 6 and Mazda CX7.

ProECU Mazda DISI currently supports 105 different ECU versions

**ProECU Mazda MX-5** – ECU reprogramming software for all worldwide Mazda MX-5 Gen 3 and 3.5 Facelift (NC) 2005 Model Year onwards models from Japan, Europe and the USA. ProECU Mazda MX-5 currently supports over 31 different ECU versions.

**ProECU Nissan GTR** – ECU reprogramming software for the Nissan GTR R35 from 2008 - 2012. This provides support for ECM and TCM reprogramming.

ProECU Nissan GTR currently supports over 33 different ECM versions, and 17 TCM versions.

**ProECU Nissan Juke** – ECU reprogramming software for the Nissan Juke 2011 onwards.

ProECU Nissan Juke currently supports over 10 different ECU versions.

**ProECU Subaru BRZ – Toyota FT86 – Scion FR-S** – ECU reprogramming software for the Subaru BRZ - Toyota FT86 - Scion FR-S suite supports the 2.0 litre direct-injection versions of 2012 onward Subaru BRZ, Toyota FT86 & Scion FR-S vehicles.

# Getting Started

## Package Contents

---

Your ProECU programming package contains a number of components. Before attempting to install or use the system, please check that you have everything required:

### Hardware license key and Programming interface

The **USB License Key** (dongle) which holds the license and software configuration.

The green **EcuTek K-Line and CAN vehicle interface**, which is the programming interface, has a black USB cable and a green OBD-II connector, as shown below:



The programming interface plugs into the diagnostic port of the car, and allows communication with the ECU.

The hardware license key is required to run the EcuTek software.

### Users Manual

All user manuals are available under the Help menu of ProECU. This will be a valuable reference for using the ProECU software as well as programming ROM files.

### Software Download

All software and drivers can also be downloaded using the **EcuTek App Downloader**, which can be downloaded from here: <http://www.ecutek.com/downloads>

## **Installation Prerequisites**

---

The following criteria must be satisfied before attempting to install ProECU

### **Software**

---

- Windows XP, Windows Vista, Windows 7 and Windows 8.

### **Hardware requirements**

---

- An IBM compatible PC with a Pentium 3 or higher processor.
- 256MB RAM required as a minimum.
- 1024x768 minimum display resolution. 1280x1024 or higher is recommended for ease of use.
- 2 x USB ports. Normal or high speed ports are acceptable.
- Internet Access is required on the PC/Laptop that the EcuTek software is run on to enable software update downloads.

# Licenses & Updates

## Feature and License Information

To check how many licenses remain on the license key, simply go to the 'Help' menu and select 'Feature and License Information'. This will display the window below, showing all software registration information, licenses and product features.

Feature & License Information

EcuTek Software Licensing | 679 Supported Tuning ECUs | 571 Supported Diagnostic ECUs

DeltaDash Enthusiast licensed  
ProECU Programming licensed  
ProECU ROM Editing licensed  
User Programming licensed

|           |  |                          |                                       |
|-----------|--|--------------------------|---------------------------------------|
| Name      | <input type="text" value="EcuTek Customer"/> | Email Address            | <input type="text"/>                  |
| Company   | <input type="text"/>                         | Phone Number             | <input type="text"/>                  |
| Address 1 | <input type="text"/>                         | License Key ID           | <input type="text" value="6A B1 6C"/> |
| Address 2 | <input type="text"/>                         | Registration Code        | <input type="text"/>                  |
| Post Code | <input type="text"/>                         | Remaining Flash Licenses | <input type="text" value="1"/>        |
| Country   | <input type="text"/>                         |                          |                                       |

OK

## License Usage Information

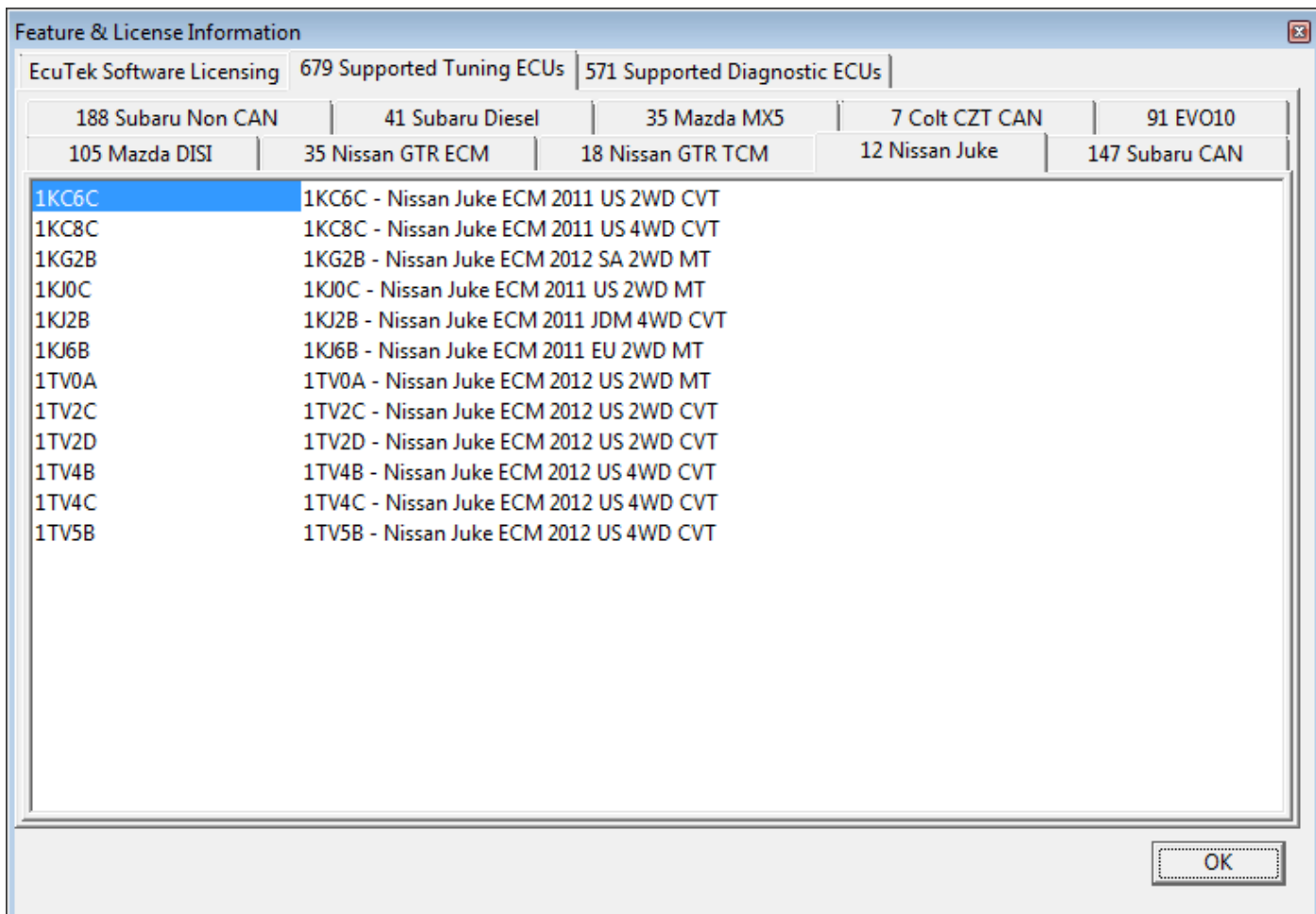
As mentioned previously, a programming license is consumed the first time that an ECU is programmed by a particular ProECU software installation. Subsequent reprograms of the same ECU do not consume further licenses.

# Supported ECU Versions

## Checking Software Support

The range of ECUs supported by ProECU is regularly updated. To view the list of ECUs supported by the version you are currently using, select the Help menu and 'Feature & Licence Information' then choose 'Supported ECUs...' which shows a list of the currently support ECU versions.

EcuTek choose the very latest ROM revisions to disassemble so you can always base your tuning on the latest ECU code revision.

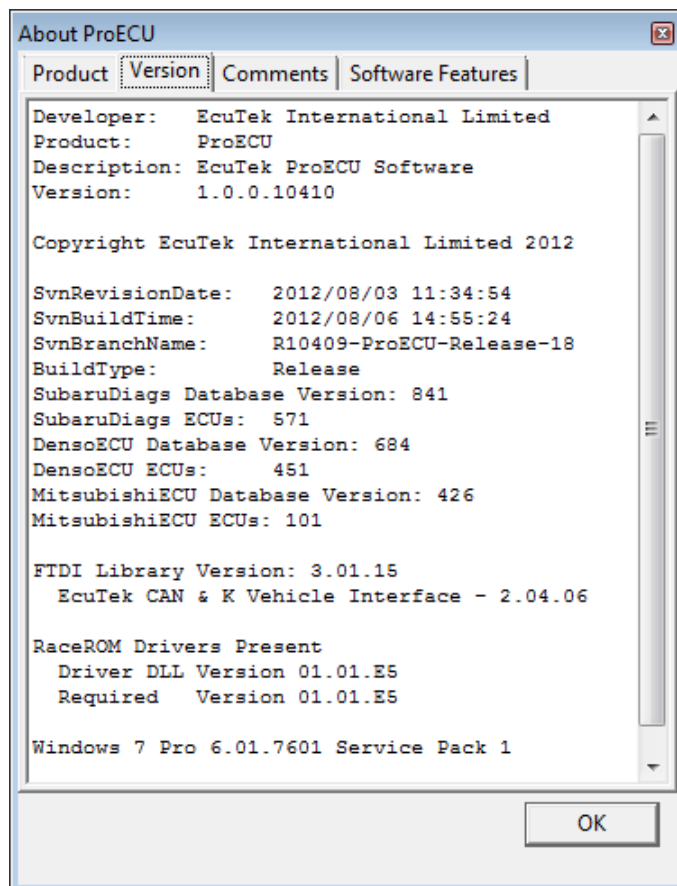
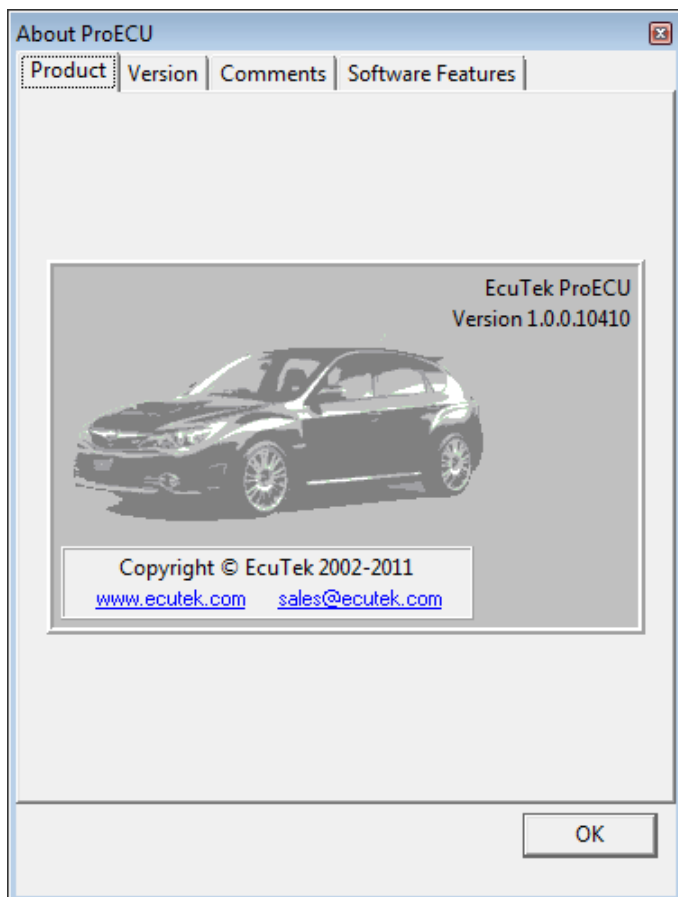


If you discover or know of another ECU version, it is in your interests to notify EcuTek as soon as possible. This gives us time to add support for the new ECU to ProECU **before** you need to use it.



## ProECU Software Version

The version of ProECU in use may be checked by selecting 'About' from the 'Help' menu.



You should always Copy and Paste your ProECU software and version info into any support emails to EcuTek, by right-clicking in the middle of the 'Version' window and selecting 'Select All'; then right-click again and select 'Copy' or press Ctrl-C. Press Ctrl-V to paste the text into an email.